

Workstation

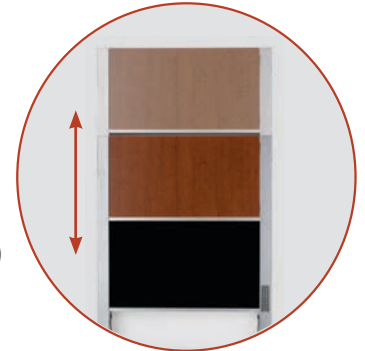
# 423 & 430 Wall Cabinets



**430**  
Wall Cabinet Workstation

**Designed** to provide modern aesthetics and best-in-class performance, our point-of-care cabinet workstations feature an advanced keyless entry system, exceptional serviceability, and are an ideal solution for clinical documentation in patient rooms and hallways.

**Electronic lift**  
Available 15" of height adjustment for sit to stand interaction (430 only)



**Proximity sensor**  
Detects when clinician has walked away and automatically closes the workstation (430 only)



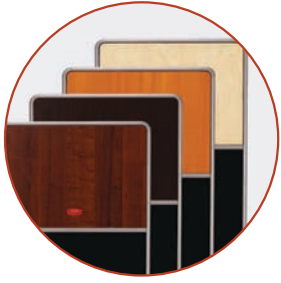
**Work Surface**  
Generous work surface features dedicated pen and mouse storage



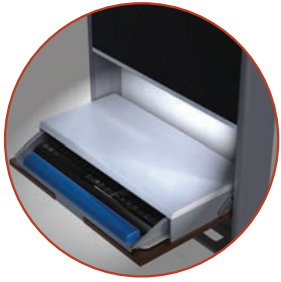
**Pin Code Locking**  
Advanced keyless entry system



## Wall Cabinet



Finishes complement a wide range of decor



Standard auto on/off task light reduces visual strain during nighttime use



Protective outer frame



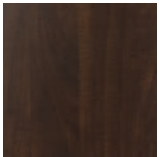
## 423 & 430 Specifications

- Internal cable management
- Tech box CPU storage:  
423: 11"W x 11"H x 2.9"D  
430: 12"W x 10"H x 2.8"D
- Tech box security: single key lock
- Dual port pre-wired USB to keyboard drawer for keyboard and mouse
- 2 step installation; mounting plate and cabinet
- 423 work surface: 20.5"w x 10"d  
430 work surface: 24"w x 8"d
- Integrated wrist rest
- Keyboard extends 14.5" from monitor
- Integrated task light with auto on/off with work surface closure

### 423

Wall Cabinet Workstation

## Standard Finish Options



Chocolate Pear



Blossom Cherry



Natural Maple

## Finish Options (minimum order\*)



Rustic Cherry

\*Minimum order quantities may be required based on size and finish selection, please inquire with your Capsa Representative regarding availability.

## Optional Features

### Electronic Height Adjustment (430 only)

- 15" Range of motion
- Push button control

### Automated Work Surface Retraction (430 only)

- Proximity sensor initiates closure when end user leaves the workstation

### Pin Code Locking

- 4-digit PIN Code
- 128 Unique PIN Code capacity
- Manual Override Key

## Suited For

- Bedside documentation
- Hallway access point for EMR
- Clinical documentation
- Medication and supply preparation
- Patient registration
- Physician order entry/rounds
- Med/Surg, Emergency, Ambulatory/Outpatient, OR's, ICU, Clinics