

# EPIC Track® App

*Check people in and out of any event, from anywhere!*

**Perform a check in/out process of people or things using a small device.**

Using the **EPIC Track App** from a smartphone, tablet, or other handheld device, users can check people in and out of any type of event from anywhere. Simply scan a person's 1 or 2D barcode, QR tag, or pdf7 barcode on their ID card using a mobile device such as a smartphone to instantly create a time stamp of when individuals enter an event, gather ID data, and push that information out to the Cloud for data storage within seconds. This process can also be used to check assets in/out to people by assigning an item to individuals as well.

Creating a new event is easy for the most inexperienced user. Gathering data takes seconds from a simple scan using the phone's built-in camera. Data is instantly delivered to the Microsoft Cloud making it easy for approved personnel to access and generate reports on that data from any PC with internet access.



 Compatible with Android™ & iOS operating systems.

## Simple Steps to Track

In the **EPIC Track App**, users can choose from a series of drop down settings and connect lists to build individual event profiles within minutes. Link customizable fields to display data during the check in/out process used to shape each tracking scenario. Then simply scan ID barcodes to check people or items in and out of an event. At any time, users can choose from a selection of reports dynamically built from each tracking profile.

### EPIC Track 2.2.8 Features

- > Easy to Deploy & Train Users
- > Cloud Hosted & Scalable
- > Configure Event Setup in Minutes
- > Identify Specific Locations
- > Countdowns & Count Threshold Limits
- > Custom Data Fields
- > Support Apple, Android & Windows
- > Instant Data Capture
- > Works On/Off-Line Anywhere
- > Connect your SIS to Upload Data
- > Assign Assets During Check-In/Out
- > Dynamic Reports Included
- > Instant Data Capture & Alerts at Check-in
- > Instant, Real-Time Data Shared at Checkpoints

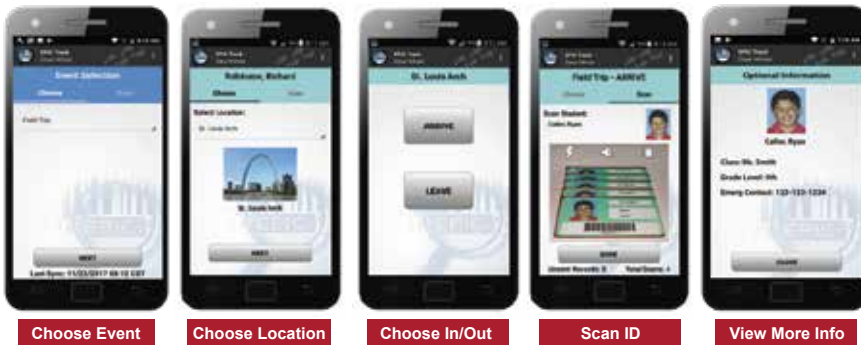


## Maximized Connectivity

*The **EPIC Track App** connects wirelessly to the EPIC Track Server, which is hosted on an Internet Cloud. Mobile devices connect via public WiFi, local WiFi or cellular.*

*If a connection is lost or cannot be established, data collected & managed by the **EPIC Track App** is stored directly on the mobile device. Data can be synchronized once a connection is made.*

**Easily navigate through the EPIC Track App to setup your event and begin scanning!**



Choose Event

Choose Location

Choose In/Out

Scan ID

View More Info



Available for download at:

*\*Licensing required for full functionality.*



Contact Elliott Data Systems, Inc. for more information or a free demonstration.

**1-888-345-8511**

[www.elliottmobilesolutions.com](http://www.elliottmobilesolutions.com)

